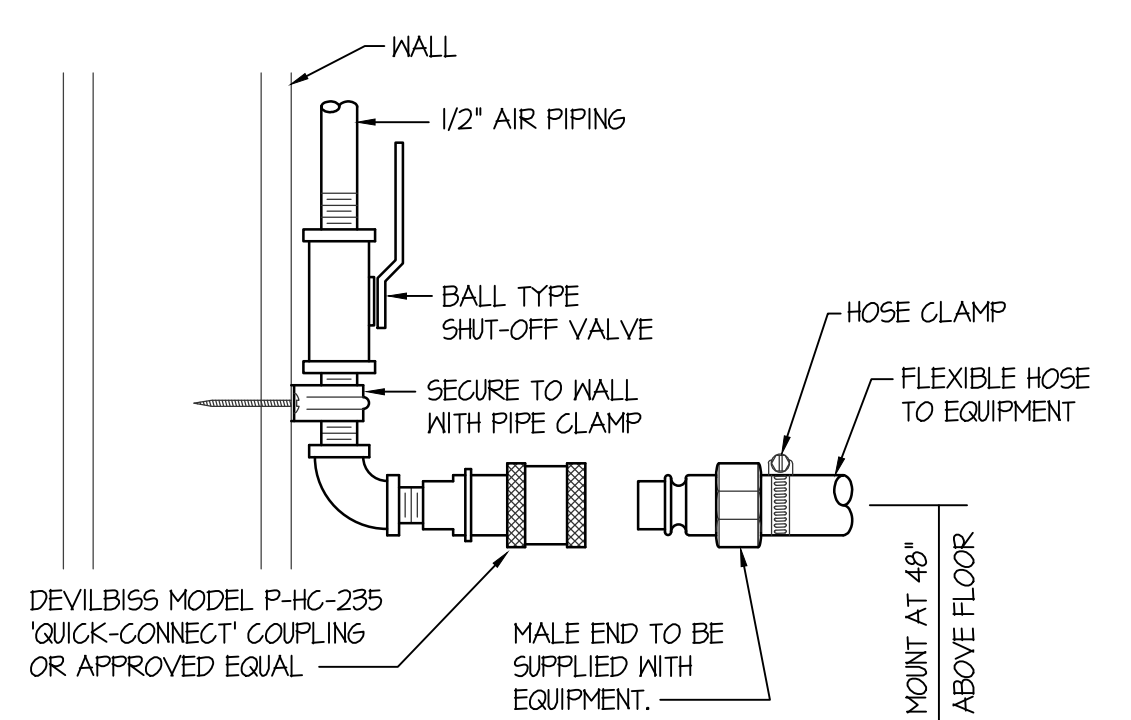
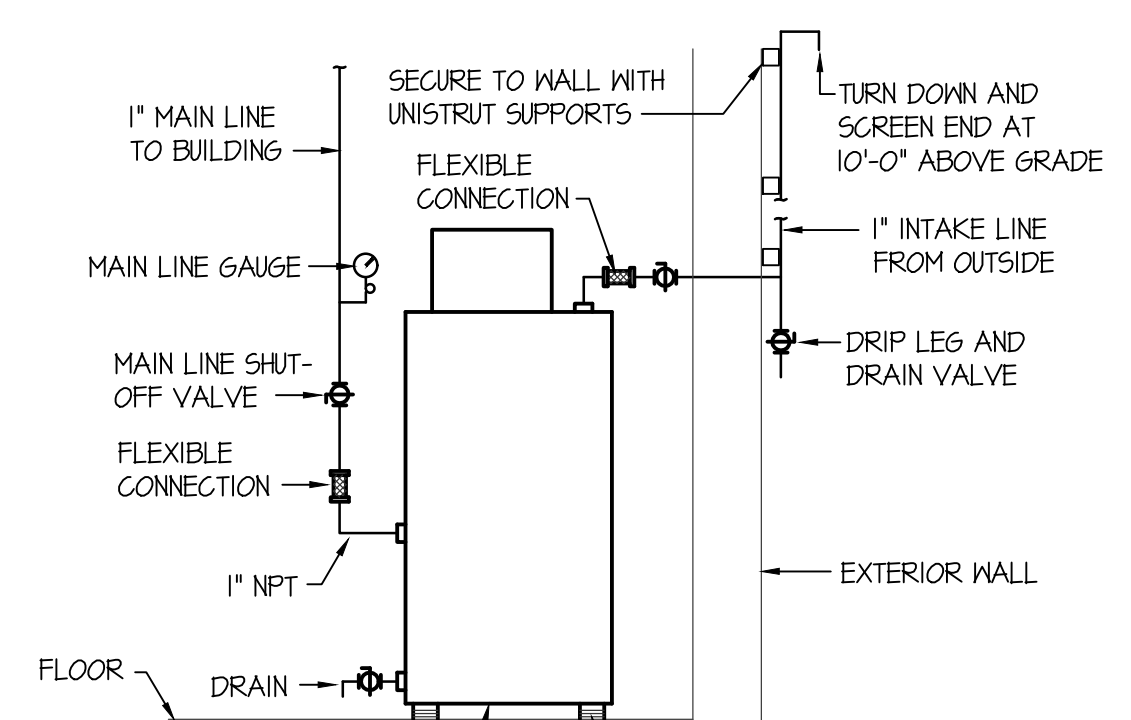


**FIXTURE SCHEDULE**

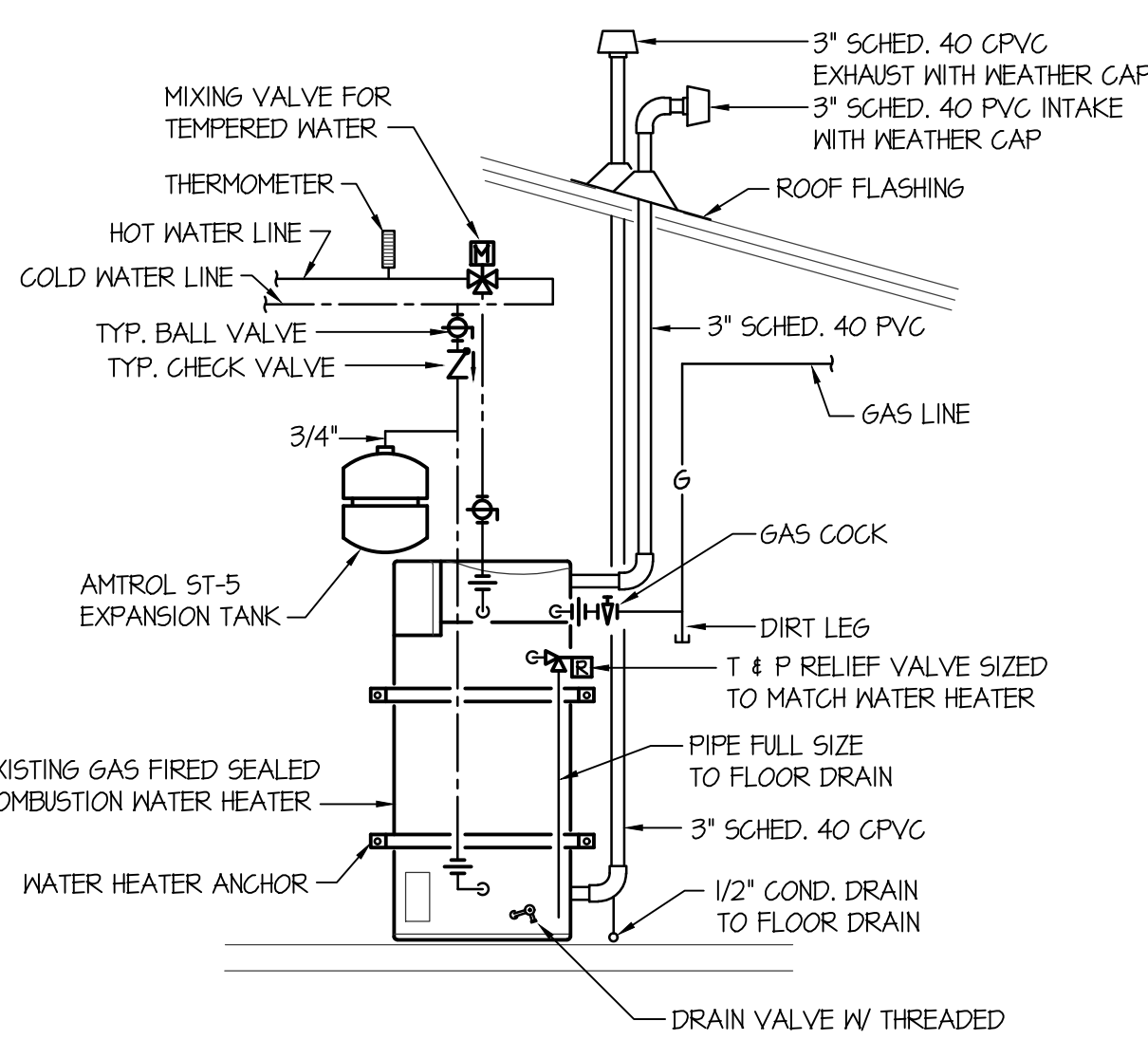
SYM.	DESCRIPTION	HOT	COLD	WASTE	VENT	SYM.	DESCRIPTION	HOT	COLD	WASTE	VENT
AC-1	AIR COMPRESSOR - HUSKY MODEL H5501 80 GAL 5 HP 2-STAGE @ 100 PSI, 208V.	---	---	---	---	SH-1	ADA SHOWER - MOEN 2352 SHOWER VALVE & MOEN 3664EP HANDHELD SHOWER ASSEMBLY WITH 24" SLIDE BAR AND T&P BALANCING VALVE. SEE ARCH. PLANS FOR GRAB BARS AND SEAT.	---	3/4"	2"	2"
AO-1	AIR OUTLET - DEVILBISS MODEL P-HG-235 "QUICK-CONNECT" COUPLING.	---	---	---	---	S-1	SINGLE COMPARTMENT SINK - ELKAY MODEL LR221R WITH 10 GA TYPE 304 STAINLESS STEEL CONSTRUCTION, 1-HOLE FAUCET DRILLINGS, ELKAY LK272C HIGH ARC FAUCET, "PERFECT DRAIN" STRAINER, 1/2" P-TRAP AND 1/2" BALL TYPE STOP VALVES.	1/2"	1/2"	1-1/2"	1-1/2"
DF-1	ADA DRINKING FOUNTAIN - ELKAY MODEL LK4549FR OUTDOOR FOUNTAIN FREEZE RESISTANT BOX.	---	1/2"	1-1/2"	1-1/2"	S-2	WALL HING SINK - KOHLER K-2032 "GREENWICH" WITH WALL CARRIER, MOEN L4600 LEVER HANDLE FAUCET, K-T115 OPEN GRID STRAINER WITH OFFSET WASTE LINE, 1/2" STOPS AND 1-1/4" P-TRAP. PROVIDE INSULATING JACKET ON HM AND WASTE PIPING.	1/2"	1/2"	1-1/2"	1-1/2"
DF-2	DRINKING FOUNTAIN - ELKAY MODEL LK4549FR OUTDOOR FOUNTAIN FREEZE RESISTANT BOX.	---	1/2"	1-1/2"	1-1/2"	UH-1	ADA WALL MOUNTED URINAL - KOHLER K-4484-T "FRESHMAN" WITH WALL CARRIER & SLOAN OPTIMA BATTERY OPERATED FLUSH VALVE. MOUNT AT ADA HEIGHT.	---	3/4"	2"	2"
DF-3	DRINKING FOUNTAIN - ELKAY MODEL L250H6LP WITH BOTTLE FILLER STATION & FILTER FRONT PUSH BAR OPERATORS, 1/2" STOP, 1-1/2" P-TRAP AND FLEX-GUARD SAFETY BUBBLER VALVE.	---	1/2"	1-1/2"	1-1/2"	WC-1	ADA TANK TYPE WATER CLOSET - KOHLER K-3650 "HIGHLINE" W/ ELONGATED BOWL, K-4610-C WHITE OPEN FRONT SEAT, BOLT CAPS AND 1/2" STOP VALVE. LEFT OR RIGHT HANDLE FLUSH LEVER 50 LEVER IS ON OPEN SIDE OF ACCESSIBLE STALLS.	---	1/2"	4"	2"
ES-1	EMERGENCY EYEWASH STATION - HAVS T26C8T WITH PUSH-OPEN BALL VALVE, EYEWASH BOWL, 1/2" SUPPLY LINE AND 1-1/2" WASTE LINE WITH P-TRAP. REFER TO DETAIL P/P-3.	---	1/2"	1-1/2"	1-1/2"	WC-2	TANK TYPE WATER CLOSET - KOHLER K-3422 "NELLWORTH" W/ ELONGATED BOWL, K-4610-C WHITE OPEN FRONT SEAT, BOLT CAPS AND 1/2" STOP VALVE. LEFT OR RIGHT HANDLE FLUSH LEVER 50 LEVER IS ON OPEN SIDE OF ACCESSIBLE STALLS.	---	1/2"	4"	2"
FD-1	2" FLOOR DRAIN - ZURN Z-415 WITH 5"Ø NICKEL-BRONZE STRAINER AND 2" DEEP SEAL P-TRAP.	---	---	2"	---	WH-1	GAS WATER HEATER - A.O. SMITH MODEL GPVX-50L HEATER, AMTROL ST-5 EXPANSION TANK, T&P VALVE, 50,000 BTU INPUT. SEE DETAIL THIS SHEET.	3/4"	3/4"	---	---
FD-2	2" FLOOR DRAIN - ZURN Z-415 WITH 5"Ø NICKEL-BRONZE STRAINER AND 2" DEEP SEAL P-TRAP, WITH TRAP PRIMER.	---	---	2"	---	TD-1	TRENCH DRAIN - ZURN 886-HD 6-3/4" WIDE HEAVY DUTY TRENCH DRAIN SYSTEM WITH 4" END OUTLET, END CAP AND DUCTILE IRON SLOTTED GRATE, LENGTH AS PER FLOOR PLAN.	---	---	4"	---
FS-1	FLOOR SINK - ZURN Z-100-KC WITH WHITE ENAMEL FINISH DOME STRAINER AND 4" DEEP SEAL P-TRAP. PROVIDE 3/4" GRATE OVER SINK.	---	---	2"	---						
HB-1	HOSE BIBB - ZURN MODEL Z1305 "ECOLOTRON" ENCASED NON-FREEZE, LENGTH TO SUIT WALL THICKNESS.	---	3/4"	---	---						
JS-1	FLOOR MOUNTED SERVICE SINK - FIAT MODEL 24E5 (24"x24") MOP SINK WITH FIAT B30AA FAUCET AND 2" DEEP SEAL P-TRAP AND STRAINER.	1/2"	1/2"	2"	2"						
JS-2	FLOOR MOUNTED SERVICE SINK - KOHLER K-6710 "WHITBY" W/ K-8940 WIRE RIM GUARD, K-9020 FAUCET ASSEMBLY AND K-1412 STRAINER WITH DEEP SEAL P-TRAP, HOSE AND HOSE CLAMP.	1/2"	1/2"	2"	2"						
L-1	ADA WALL HING LAVATORY - KOHLER K-2032 "GREENWICH" WITH WALL CARRIER, MOEN L4600 LEVER HANDLE FAUCET, K-T115 OPEN GRID STRAINER WITH OFFSET WASTE LINE, 1/2" STOPS AND 1-1/4" P-TRAP. PROVIDE INSULATING JACKET ON HM AND WASTE PIPING.	1/2"	1/2"	1-1/2"	1-1/2"						



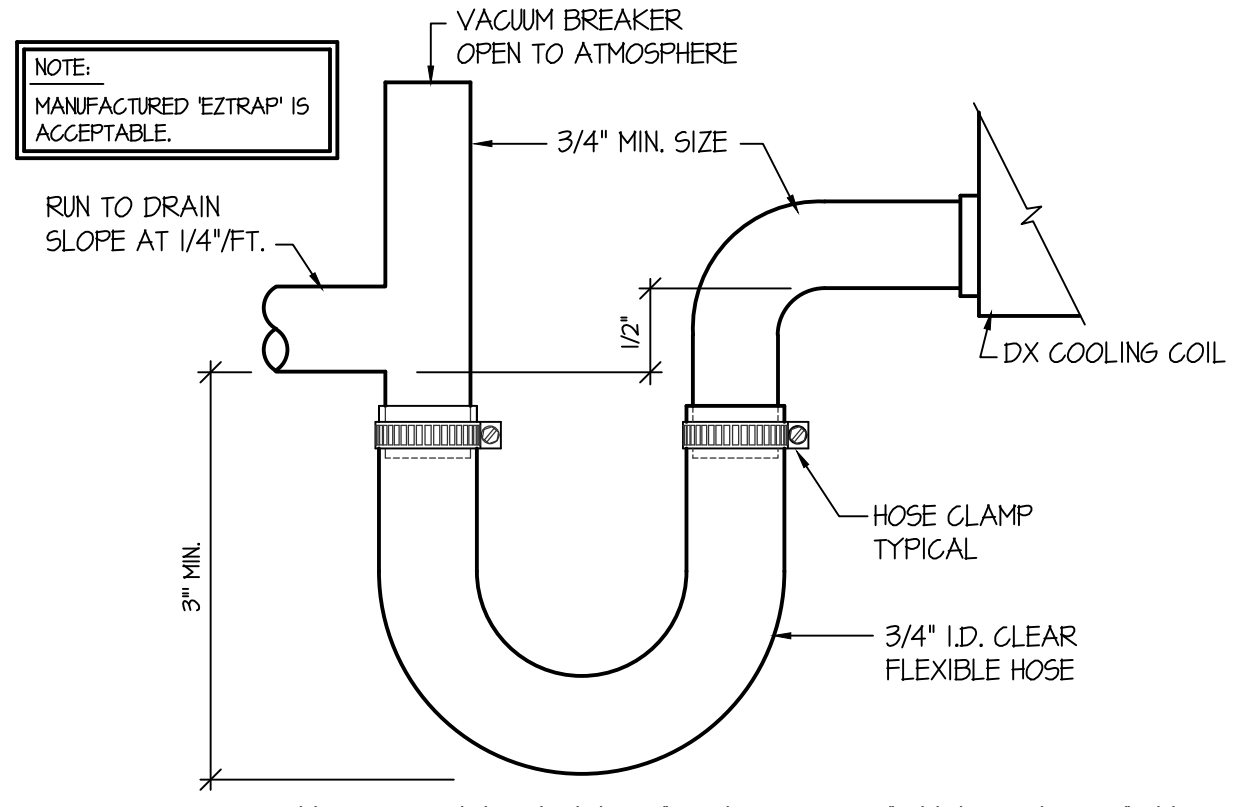
**COMPRESSED AIR OUTLET DETAIL**  
NO SCALE



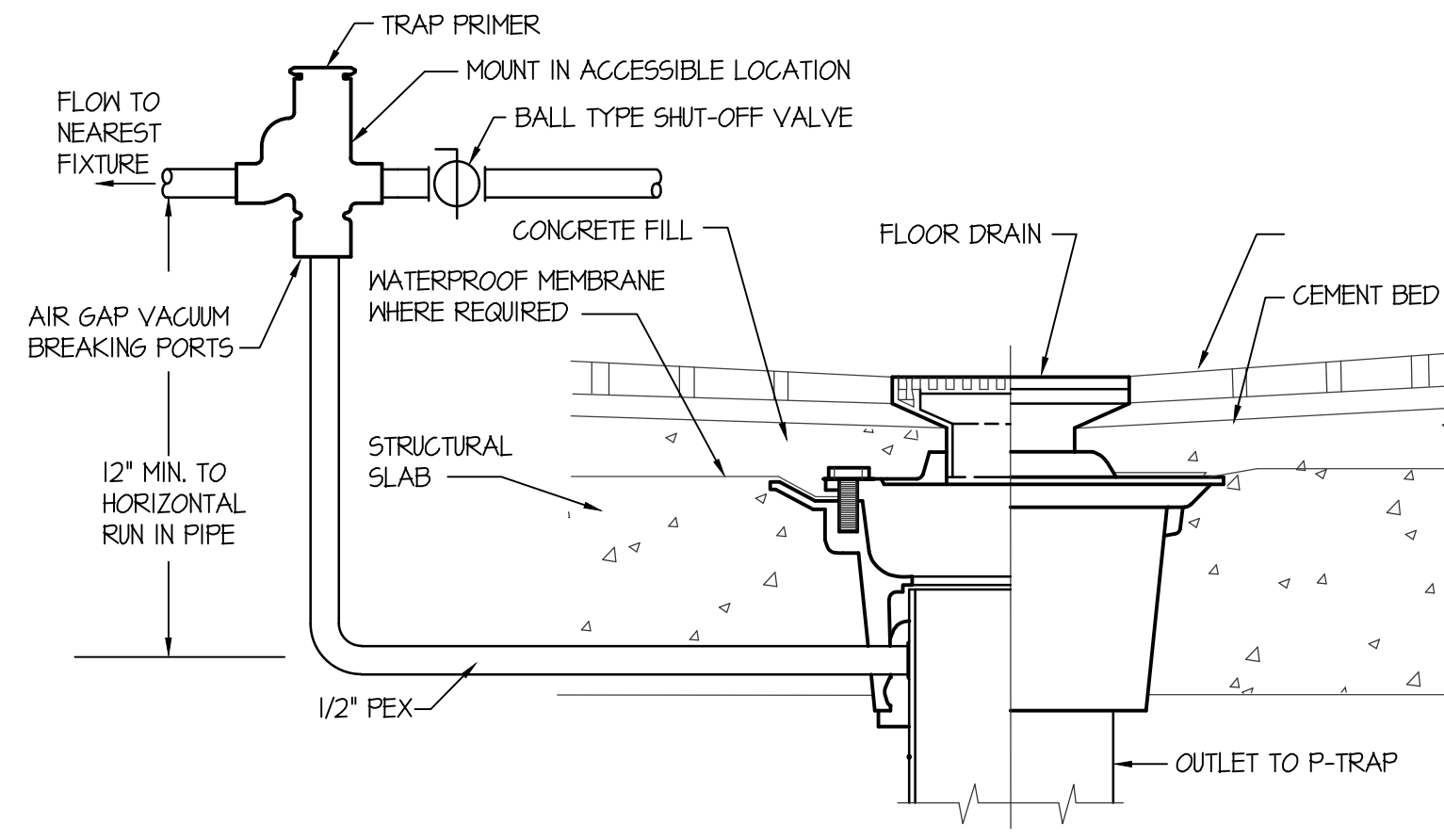
**AIR COMPRESSOR PIPING DETAIL**  
NO SCALE



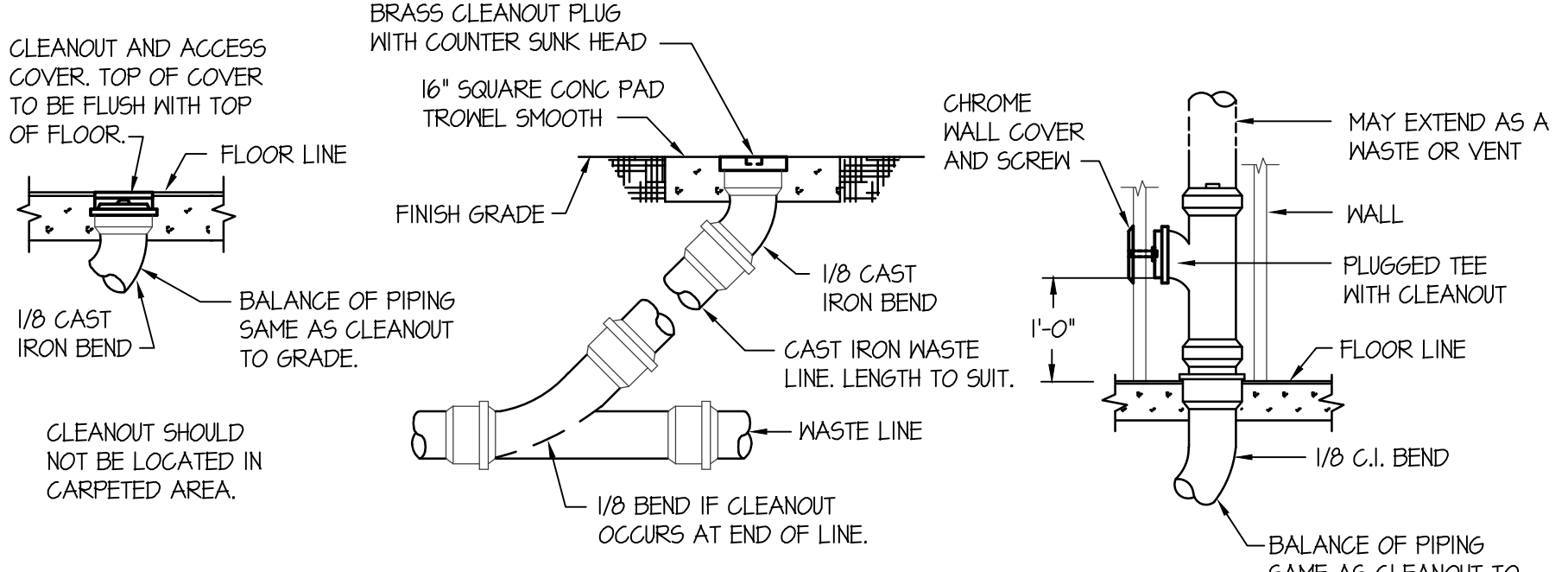
**GAS FIRED WATER HEATER PIPING DIAGRAM**  
NO SCALE



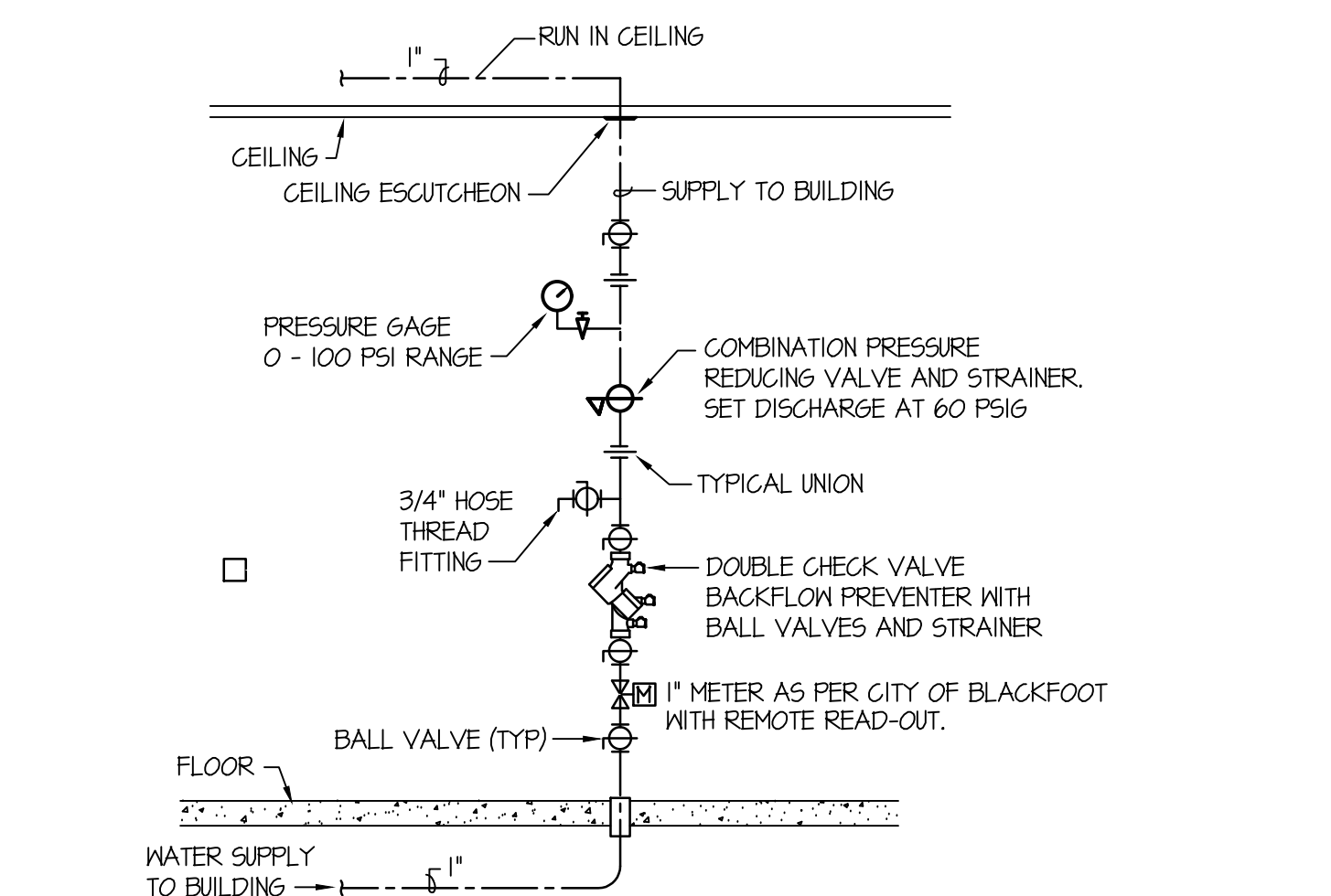
**DX COIL CONDENSATE DRAIN DETAIL**  
NO SCALE



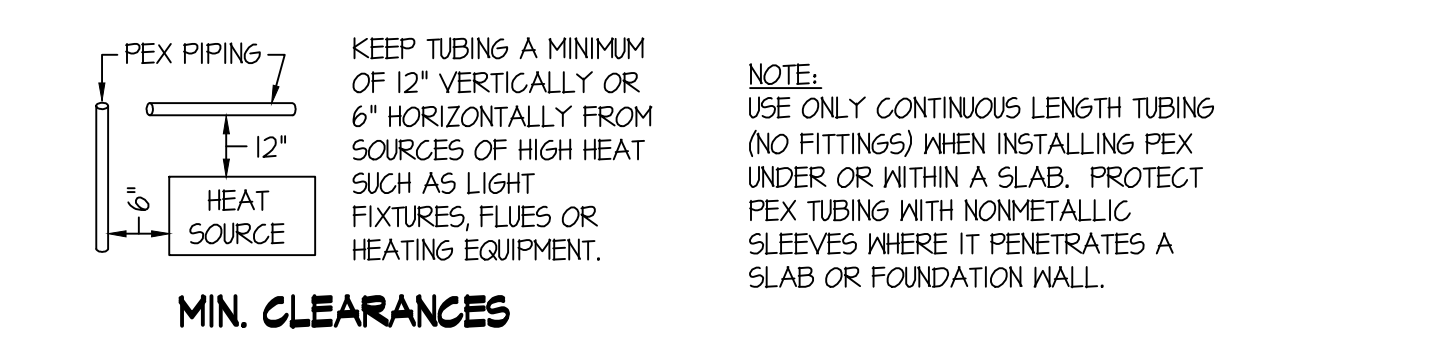
**TRAP PRIMER DETAIL**  
NO SCALE



**FLOOR CLEANOUT (FCO) CLEANOUT TO GRADE (COTG) WALL CLEANOUT (WCO) CLEAN OUT DETAILS**  
NO SCALE



**VERTICAL WATER PRESSURE REDUCING STATION**  
NO SCALE



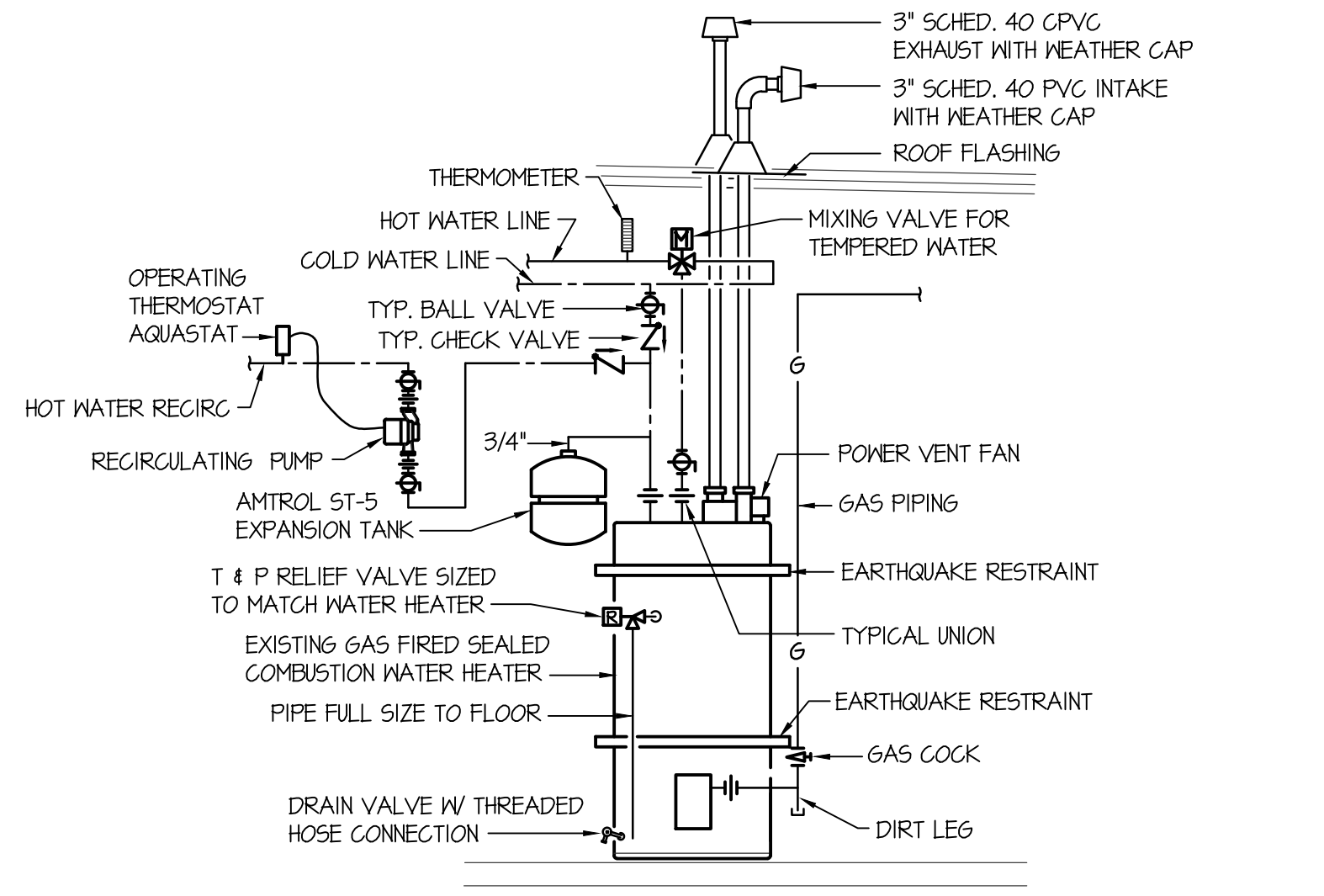
**MIN. CLEARANCES**

TUBING SIZE	MIN. RADIUS BENDING
3/8"	4"
1/2"	5"
3/4"	7"
1"	9"

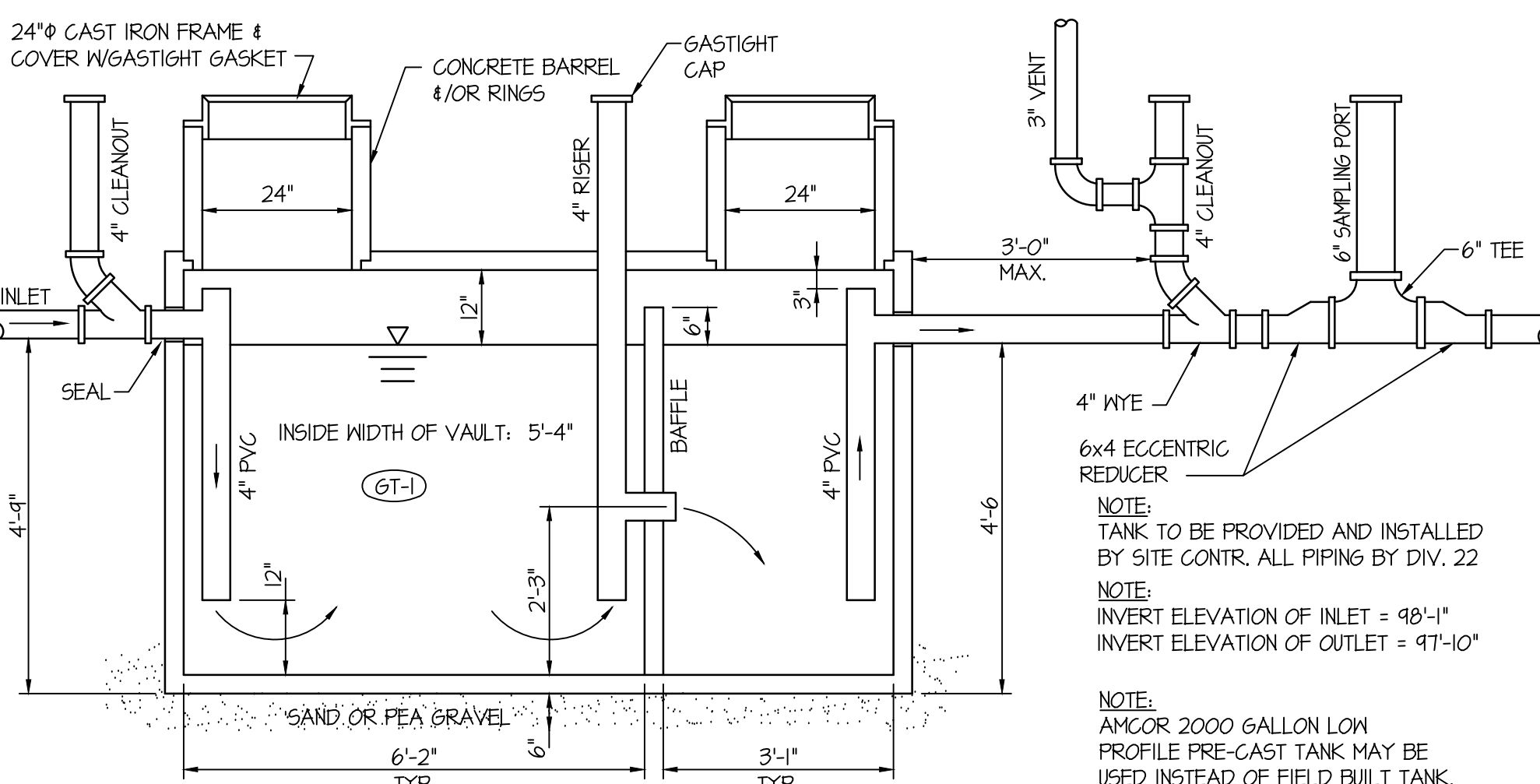
DO NOT CRUSH OR KINK TUBING

DO NOT DRAG TUBING OVER ROUGH TERRAIN, ROCKS, OR ANY SURFACE THAT CAN CUT, PUNCTURE OR DAMAGE TUBING WALL.

**PEX PIPE HANDLING DETAILS**  
NO SCALE

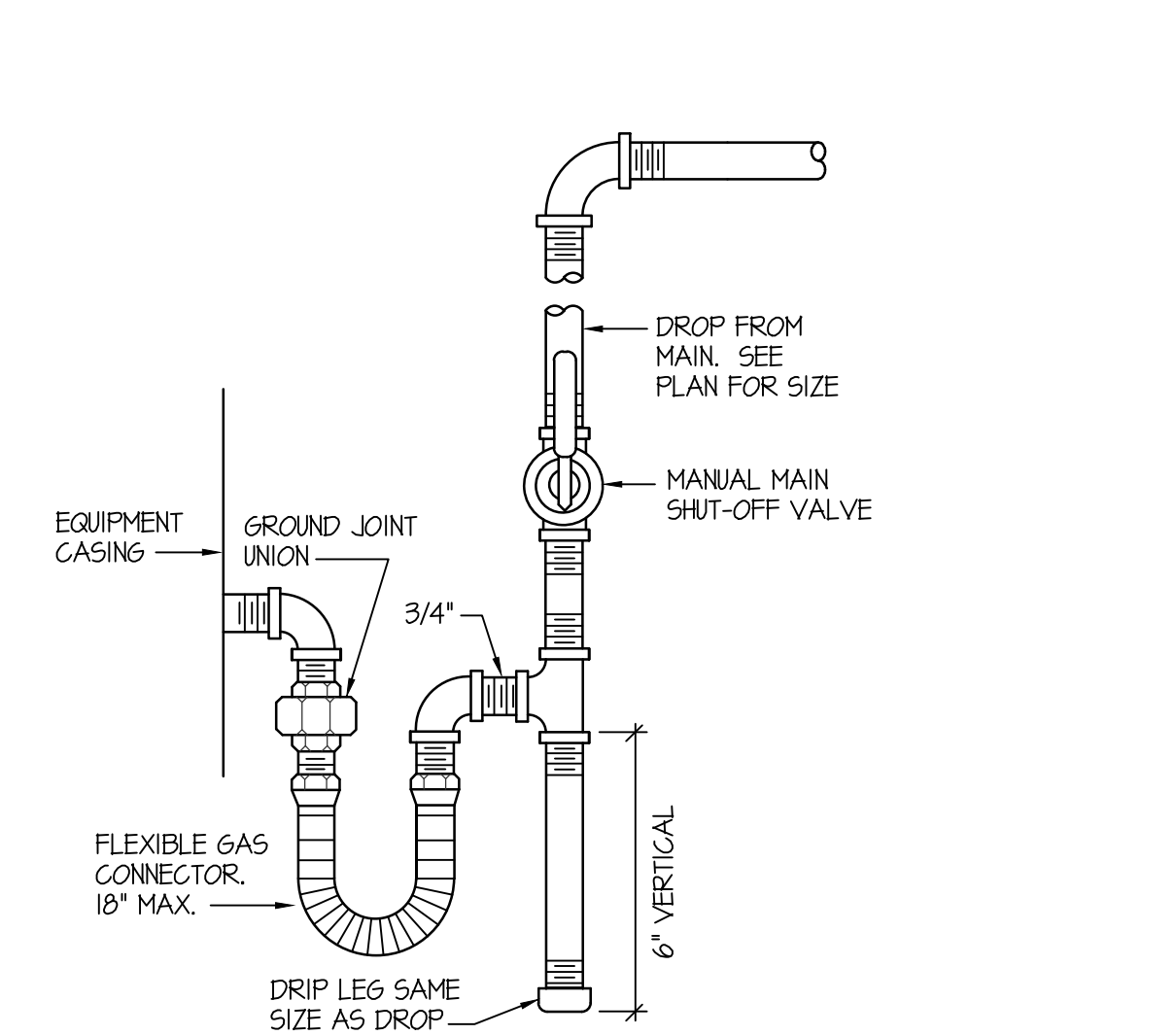


**GAS FIRED WATER HEATER PIPING DIAGRAM**  
NO SCALE



**SAND AND GREASE INTERCEPTOR DETAIL**  
NO SCALE

**PEX PIPE FITTING DETAILS**  
NO SCALE

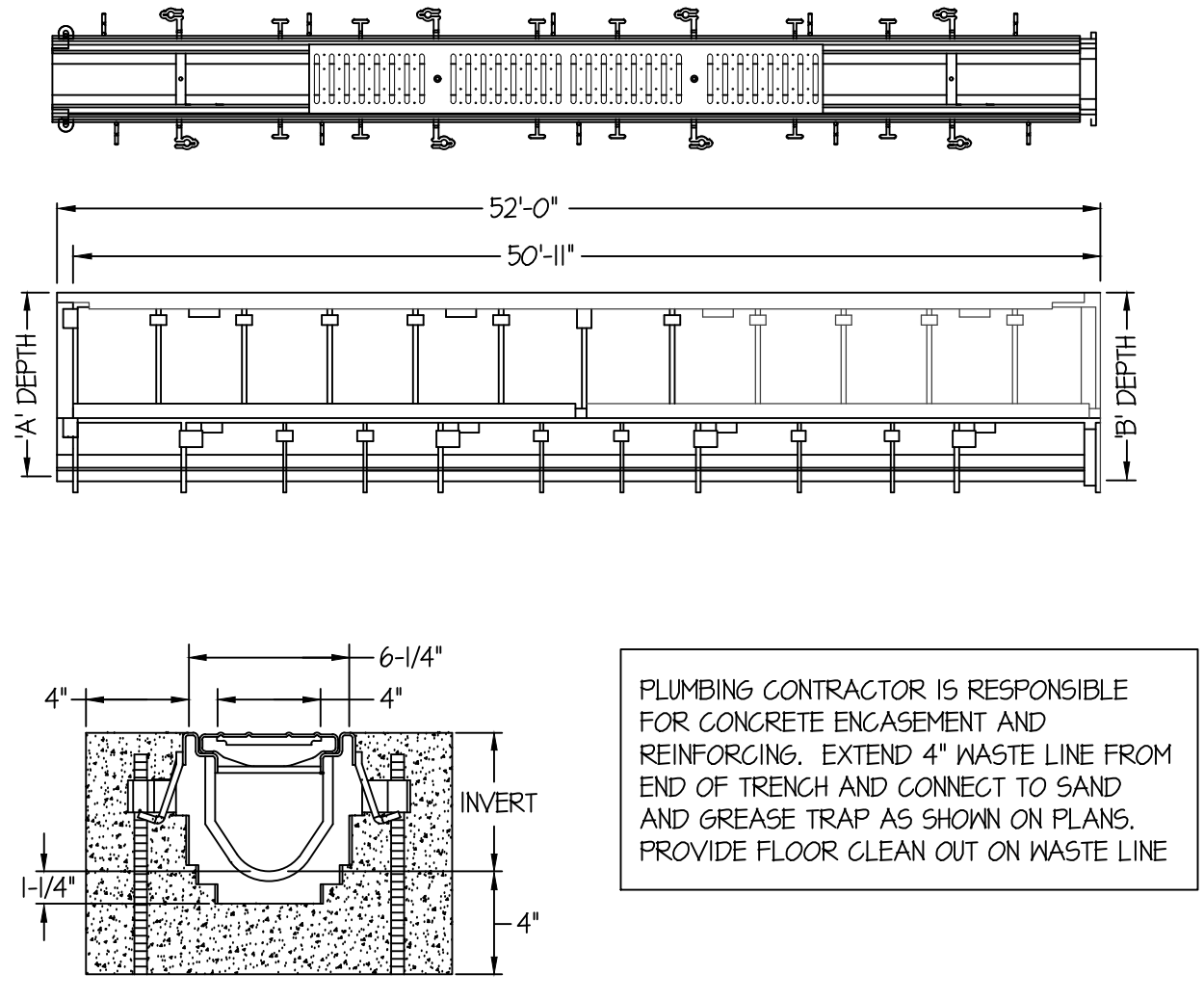


**GAS LINE CONNECTION DETAIL**  
NO SCALE

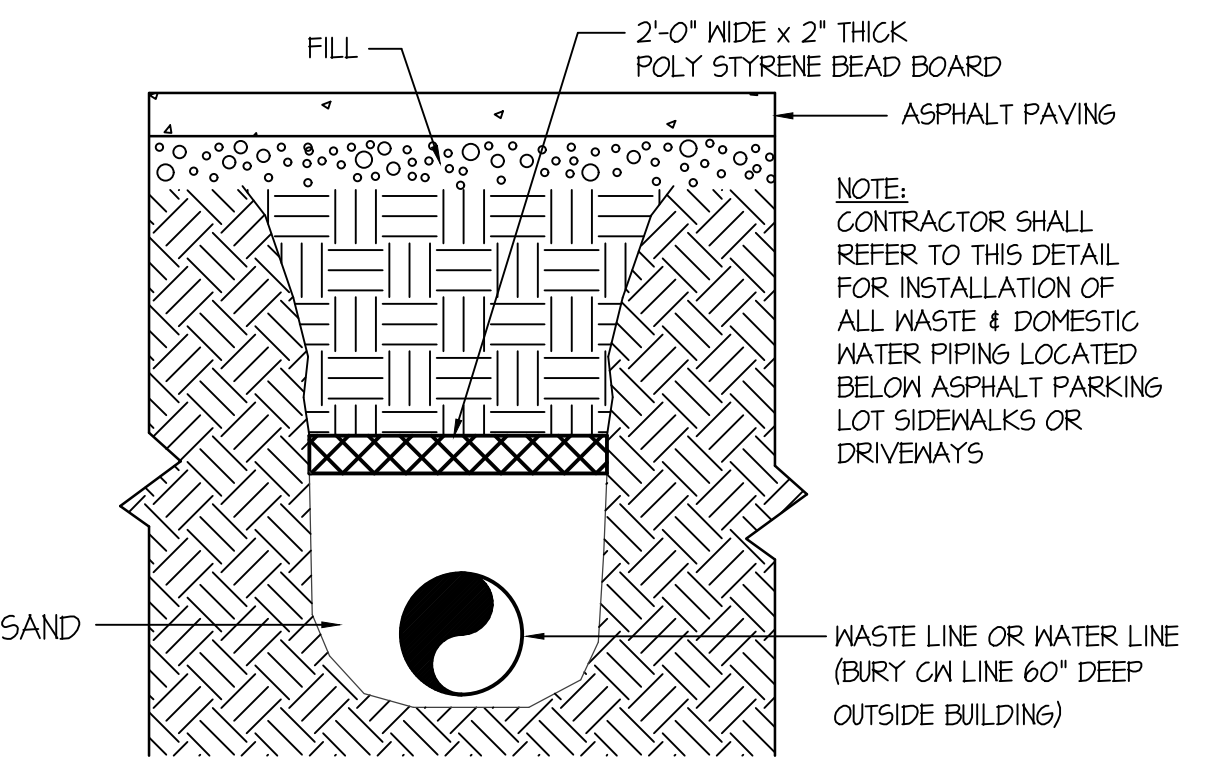
**TRENCH SECTIONS**

TRENCH NO.	SHALLOW	DEEP
8604	5.30"	5.40"
8605	5.40"	6.50"
8606	6.50"	7.10"
8607	7.10"	7.10"
8608	7.10"	8.30"
8609	8.30"	8.40"
8610	8.40"	9.50"
8611	9.50"	10.10"

\* TRENCH SECTIONS ARE 80" LONG, DO NOT USE NEUTRAL SECTIONS.



**TRENCH DRAIN INSTALLATION DETAILS**  
NO SCALE



**UNDERGROUND PIPE INSULATION**  
NO SCALE

REVISIONS

NO.	REMARKS

PROJECT INFORMATION

CHECKED	DCS
DRAWN	TD
DATE	May 3, 2019
SBAS JOB NO.	18-144
DPW JOB NO.	17-603
VA JOB NO.	FAI ID-13-03
SHEET NUMBER:	

**Professional Engineer**  
 David B. Swartz  
 STATE OF IDAHO  
 LICENSE NO. 18094  
 May 02, 2019

**Engineered Systems Associates**  
 1355 EAST CENTER  
 POCAHELLO, IDAHO 83201  
 PHONE: (208) 233-0501  
 FAX: (208) 233-0529  
 EMAIL: esa@ingsystems.com  
 ESA JOB NUMBER: 18094

**MP2.11**  
 PACKAGE NUMBER 2 - BUILDING DBS